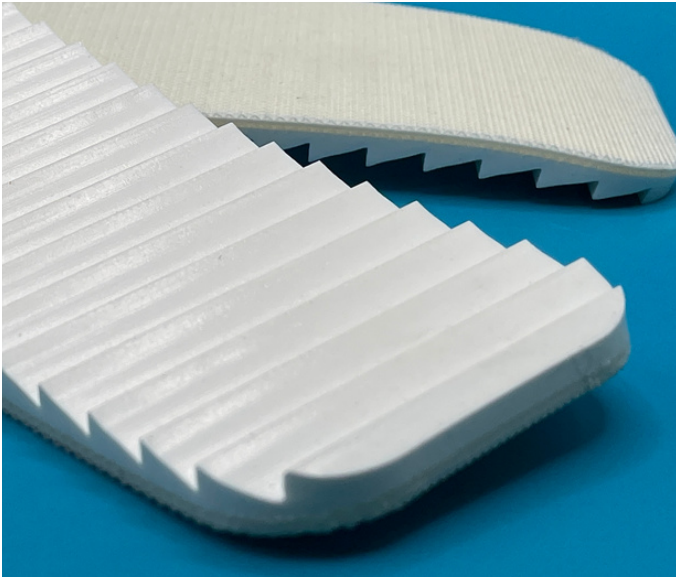


Monoflex WP 280

03-036 | Technical Data Sheet



Technical Information

Plies	2
Overall Thickness	.193"
Tensile Force	46# @ 1%
in N/mm	8
Standard Tension	.5%
Min. Pulley	2.4"
Min. Back Flex	3.54"
Weight	1.09 Lbs/SF
Product Operational Temp. Range	14° to 176° F
Hardness	60 Duro Shore A
Max. Width	47"

Material Construction

Conveying Surface

Compound	PVC
Cover Surface	Saw Tooth .110"
Color	White

Underside

Fabric	Monofilament Polyester
Bottom Surface	Bare
Coefficient of Friction	.25

Standard Fabrications

Longitudinal Splice	No
Guide Applied to Cover	No
Sidewalls	No
Edge Capped	No
Cleats	No
Guide Applied to Bottom	Yes
Mechanical Lacing	Yes

Features

FDA	Yes
Anti-Microbial	No
Anti-Static	No
Flame Retardant	No
Cross Rigid	Yes
Troughing	No
Curve Belt Compatible	No

Monoflex WP 280

03-036 | Splicing Instructions

High Speed Press Settings

Pressure	28 psi
Temp. Top	360° F
Temp. Bottom	336° F
Dwell Time	120 sec
Foil Position	Inside (SFL)
Foil	White PVC
Release Top	Impression
Release Bottom	TFE

Water Cooled Press Settings

Pressure	45 psi
Temp. Top	375° F
Temp. Bottom	335° F
Dwell Time	30 sec
Foil Position	None
Foil	None
Release Top	Impression
Release Bottom	TFE



Scan for splicing
demo video

Compatible Splices

Endless Splices

Step Splice	Yes
Straight Finger	No
Split Finger	Yes
Bias Finger	Yes
Skive	No
Finger Over Step	Yes
Step Over Finger	Yes
Electrode	No
Butt Weld	No
Lock Lap	No

Mechanical Splices

Clipper	Yes
Alligator	Yes
Staple	Yes
Minet	Yes
Plastic Spiral	No
Plastic Rivet	No
Plastic Hinge	No
Super Screw	No
Bolt Hinge	No
Rivet Hinge	No

Sparks Specialty Splices

Hidden	No
Hybrid	No
Trailing Flap	No
VT	No
Hybrid VT	No
7/11	No
Urethane Top	No
Urethane Bottom	No
Urethane Splash	No