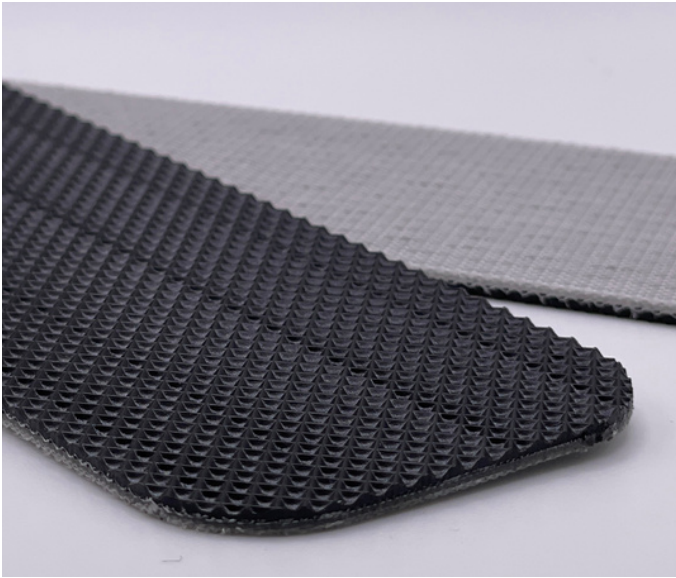


Monoflex LBU 220

03-143 | Technical Data Sheet



Technical Information

Plies	2
Overall Thickness	.087"
Tensile Force	57# @ 1%
in N/mm	10
Standard Tension	.5%
Min. Pulley	2"
Min. Back Flex	3.15"
Weight	.48 Lbs/SF
Product Operational Temp. Range	-4° to 212° F
Hardness	92 Duro Shore A
Max. Width	82"

Material Construction

Conveying Surface

Compound	Polyurethane
Cover Surface	Inverted Diamond
Color	Black

Underside

Fabric	Monofilament Polyester
Bottom Surface	PU Impregnated
Coefficient of Friction	.2

Standard Fabrications

Longitudinal Splice	Yes
Guide Applied to Cover	Yes
Sidewalls	Yes
Edge Capped	No
Cleats	Yes
Guide Applied to Bottom	Yes
Mechanical Lacing	Yes

Features

FDA	Yes
Anti-Microbial	No
Anti-Static	No
Flame Retardant	No
Cross Rigid	Yes
Troughing	No
Curve Belt Compatible	No

Monoflex LBU 220

03-143 | Splicing Instructions

High Speed Press Settings

Pressure	29 psi
Temp. Top	338° F
Temp. Bottom	320° F
Dwell Time	45 sec
Foil Position	None
Foil	None
Release Top	Impression
Release Bottom	TFE

Water Cooled Press Settings

Pressure	40 psi
Temp. Top	360° F
Temp. Bottom	350° F
Dwell Time	N/A
Foil Position	Bottom
Foil	Clear PU
Release Top	Impression
Release Bottom	TFE



Scan for splicing
demo video

Compatible Splices

Endless Splices

Step Splice	No
Straight Finger	Yes
Split Finger	No
Bias Finger	Yes
Skive	No
Finger Over Step	No
Step Over Finger	No
Electrode	No
Butt Weld	No
Lock Lap	No

Mechanical Splices

Clipper	Yes
Alligator	Yes
Staple	No
Minet	No
Plastic Spiral	Yes
Plastic Rivet	Yes
Plastic Hinge	No
Super Screw	No
Bolt Hinge	No
Rivet Hinge	No

Sparks Specialty Splices

Hidden	No
Hybrid	No
Trailing Flap	No
VT	No
Hybrid VT	No
7/11	No
Urethane Top	No
Urethane Bottom	No
Urethane Splash	No