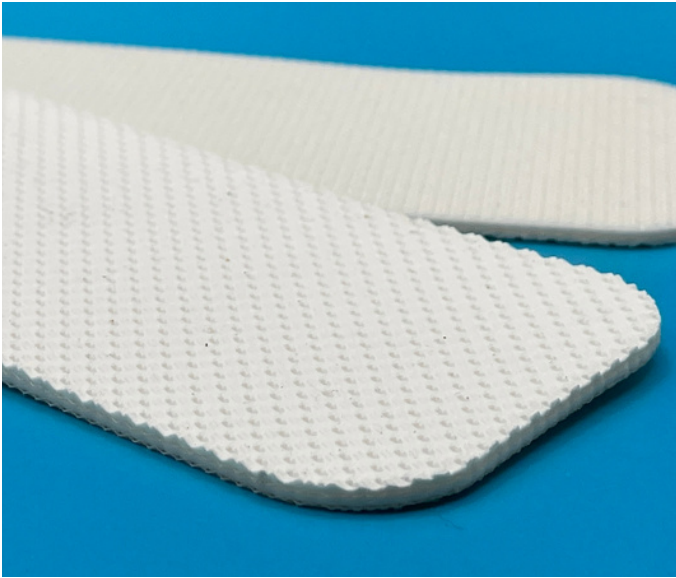


# Monoflex WP 220 S

03-244 | Technical Data Sheet



## Technical Information

Plies	2
Overall Thickness	.083"
Tensile Force	29# @ 1%
in N/mm	5
Standard Tension	.5%
Min. Pulley	1.5"
Min. Back Flex	2.4"
Weight	.47 Lbs/SF
Product Operational Temp. Range	14° to 230° F
Hardness	65 Duro Shore A
Max. Width	78.75"

## Material Construction

### Conveying Surface

Compound	PVC
Cover Surface	.02" Pebble Top
Color	White

### Underside

Fabric	Monofilament Polyester
Bottom Surface	Fabric
Coefficient of Friction	.25

## Standard Fabrications

Longitudinal Splice	Yes
Guide Applied to Cover	Yes
Sidewalls	No
Edge Capped	Yes
Cleats	Yes
Guide Applied to Bottom	Yes
Mechanical Lacing	Yes

## Features

FDA	Yes
Anti-Microbial	No
Anti-Static	No
Flame Retardant	No
Cross Rigid	Yes
Troughing	No
Curve Belt Compatible	No

# Monoflex WP 220 S

03-244 | Splicing Instructions

## High Speed Press Settings

Pressure	28 psi
Temp. Top	349° F
Temp. Bottom	330° F
Dwell Time	50 sec
Foil Position	Top
Foil	White PVC
Release Top	Impression
Release Bottom	TFE

## Water Cooled Press Settings

Pressure	40 psi
Temp. Top	375° F
Temp. Bottom	330° F
Dwell Time	N/A
Foil Position	Top
Foil	White PVC
Release Top	Impression
Release Bottom	TFE



Scan for splicing demo video

## Compatible Splices

### Endless Splices

Step Splice	Yes
Straight Finger	No
Split Finger	Yes
Bias Finger	Yes
Skive	No
Finger Over Step	Yes
Step Over Finger	Yes
Electrode	No
Butt Weld	No
Lock Lap	No

### Mechanical Splices

Clipper	Yes
Alligator	Yes
Staple	Yes
Minet	No
Plastic Spiral	Yes
Plastic Rivet	Yes
Plastic Hinge	Yes
Super Screw	No
Bolt Hinge	No
Rivet Hinge	No

### Sparks Specialty Splices

Hidden	No
Hybrid	Yes
Trailing Flap	No
VT	No
Hybrid VT	No
7/11	No
Urethane Top	No
Urethane Bottom	No
Urethane Splash	No