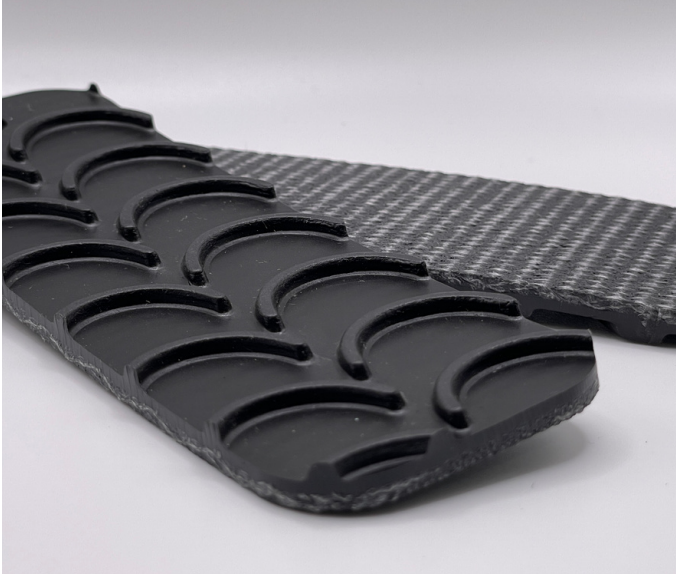


120 Black Crescent Top

01-003 | Technical Data Sheet



Technical Information

Plies	1
Overall Thickness	.24"
Tensile Force	120# @ 2%
in N/mm	21
Standard Tension	.50%
Min. Pulley	2"
Min. Back Flex	4"
Weight	.97 Lbs/SF
Product Operational Temp. Range	20° to 180° F
Hardness	65 Duro Shore A
Max. Width	60"

Material Construction

Conveying Surface

Compound	PVC
Cover Surface	Crescents
Color	Black

Underside

Fabric	Interwoven Polyester
Bottom Surface	Brushed Fabric
Coefficient of Friction	.25

Standard Fabrications

Longitudinal Splice	No
Guide Applied to Cover	No
Sidewalls	No
Edge Capped	No
Cleats	No
Guide Applied to Bottom	Yes
Mechanical Lacing	Yes

Features

FDA	No
Anti-Microbial	No
Anti-Static	No
Flame Retardant	No
Cross Rigid	No
Troughing	Yes
Curve Belt Compatible	No

120 Black Crescent Top

01-003 | Splicing Instructions

High Speed Press Settings

Pressure	29 psi
Temp. Top	345° F
Temp. Bottom	345° F
Dwell Time	120 sec
Foil Position	Top&Bottom
Foil	Black PVC
Release Top	Impression
Release Bottom	TFE

Water Cooled Press Settings

Pressure	40 psi
Temp. Top	385° F
Temp. Bottom	335° F
Dwell Time	N/A
Foil Position	Top
Foil	Black PVC
Release Top	Impression
Release Bottom	TFE



Scan for splicing
demo video

Compatible Splices

Endless Splices

Step Splice	No
Straight Finger	Yes
Split Finger	No
Bias Finger	Yes
Skive	Yes
Finger Over Step	No
Step Over Finger	No
Electrode	No
Butt Weld	No
Lock Lap	No

Mechanical Splices

Clipper	Yes
Alligator	Yes
Staple	Yes
Minet	Yes
Plastic Spiral	No
Plastic Rivet	No
Plastic Hinge	No
Super Screw	No
Bolt Hinge	No
Rivet Hinge	Yes

Sparks Specialty Splices

Hidden	No
Hybrid	No
Trailing Flap	Yes
VT	No
Hybrid VT	No
7/11	No
Urethane Top	No
Urethane Bottom	No
Urethane Splash	No