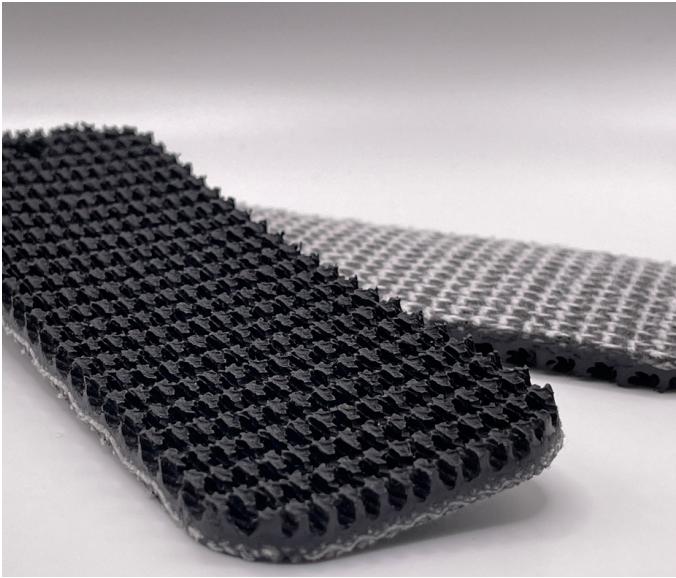


# Ruff Tuff 75

## 01-011 | Technical Data Sheet



### Technical Information

Plies	1
Overall Thickness	.250"
Tensile Force	120# @ 2%
in N/mm	21
Standard Tension	1%
Min. Pulley	2.5"
Min. Back Flex	5"
Weight	1.0 Lbs/SF
Product Operational Temp. Range	0° to 180° F
Hardness	55 Duro Shore A
Max. Width	72"

### Material Construction

#### Conveying Surface

Compound	PVC
Cover Surface	.20" Rough Top
Color	Black

#### Underside

Fabric	Interwoven Polyester
Bottom Surface	Brushed Fabric
Coefficient of Friction	.35

### Standard Fabrications

Longitudinal Splice	Yes
Guide Applied to Cover	No
Sidewalls	No
Edge Capped	No
Cleats	No
Guide Applied to Bottom	Yes
Mechanical Lacing	Yes

### Features

FDA	No
Anti-Microbial	No
Anti-Static	No
Flame Retardant	No
Cross Rigid	No
Troughing	Yes
Curve Belt Compatible	No

# Ruff Tuff 75

## 01-011 | Splicing Instructions

### High Speed Press Settings

Pressure	28 psi
Temp. Top	376° F
Temp. Bottom	365° F
Dwell Time	60 sec
Foil Position	Bottom
Foil	Black PVC
Release Top	Impression
Release Bottom	TFE

### Water Cooled Press Settings

Pressure	40 psi
Temp. Top	375° F
Temp. Bottom	365° F
Dwell Time	N/A
Foil Position	Bottom
Foil	Black PVC
Release Top	Impression
Release Bottom	TFE



Scan for splicing  
demo video

## Compatible Splices

### Endless Splices

Step Splice	No
Straight Finger	Yes
Split Finger	No
Bias Finger	Yes
Skive	Yes
Finger Over Step	No
Step Over Finger	No
Electrode	No
Butt Weld	No
Lock Lap	No

### Mechanical Splices

Clipper	Yes
Alligator	Yes
Staple	Yes
Minet	Yes
Plastic Spiral	No
Plastic Rivet	No
Plastic Hinge	No
Super Screw	No
Bolt Hinge	No
Rivet Hinge	No

### Sparks Specialty Splices

Hidden	No
Hybrid	No
Trailing Flap	Yes
VT	No
Hybrid VT	No
7/11	No
Urethane Top	No
Urethane Bottom	No
Urethane Splash	No