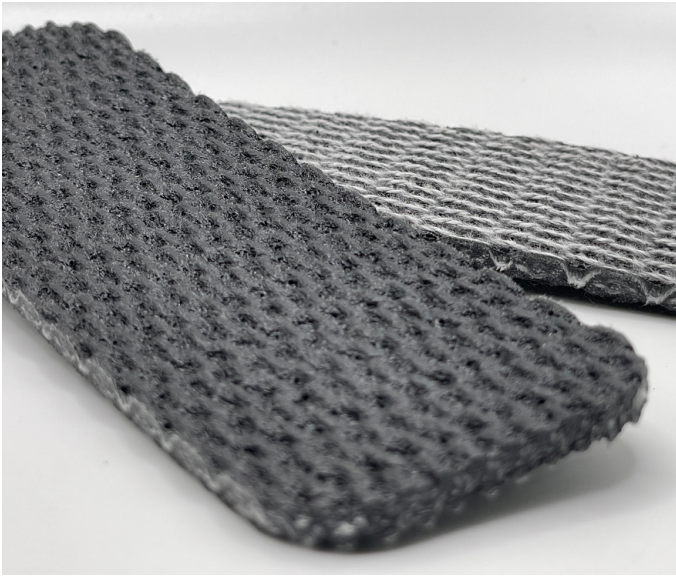


# Tuffy 150 Black BB x BB

01-200 | Technical Data Sheet



## Technical Information

Plies	1
Overall Thickness	.180"
Tensile Force	150# @ 2%
in N/mm	26
Standard Tension	.50%
Min. Pulley	2.5"
Min. Back Flex	2.5"
Weight	.910 Lbs/SF
Product Operational Temp. Range	0° to 180° F
Hardness	85 Duro Shore A
Max. Width	59.5"

## Material Construction

### Conveying Surface

Compound	PVC
Cover Surface	Coarse Fabric
Color	Black

### Underside

Fabric	Interwoven Polyester
Bottom Surface	Brushed Fabric
Coefficient of Friction	.23

## Standard Fabrications

Longitudinal Splice	Yes
Guide Applied to Cover	Yes
Sidewalls	No
Edge Capped	No
Cleats	Yes
Guide Applied to Bottom	Yes
Mechanical Lacing	Yes

## Features

FDA	No
Anti-Microbial	No
Anti-Static	No
Flame Retardant	Yes
Cross Rigid	Yes
Troughing	No
Curve Belt Compatible	No

# Tuffy 150 Black BB x BB

01-200 | Splicing Instructions

## High Speed Press Settings

Pressure	28 psi
Temp. Top	376° F
Temp. Bottom	365° F
Dwell Time	90 sec
Foil Position	Top/Bottom
Foil	Black PVC
Release Top	Smooth
Release Bottom	PVC

## Water Cooled Press Settings

Pressure	No settings
Temp. Top	
Temp. Bottom	
Dwell Time	
Foil Position	
Foil	
Release Top	
Release Bottom	



Scan for splicing demo video

## Compatible Splices

### Endless Splices

Step Splice	No
Straight Finger	Yes
Split Finger	No
Bias Finger	Yes
Skive	Yes
Finger Over Step	No
Step Over Finger	No
Electrode	No
Butt Weld	No
Lock Lap	No

### Mechanical Splices

Clipper	Yes
Alligator	Yes
Staple	Yes
Minet	Yes
Plastic Spiral	No
Plastic Rivet	No
Plastic Hinge	No
Super Screw	No
Bolt Hinge	No
Rivet Hinge	Yes

### Sparks Specialty Splices

Hidden	No
Hybrid	No
Trailing Flap	No
VT	No
Hybrid VT	No
7/11	No
Urethane Top	No
Urethane Bottom	No
Urethane Splash	No