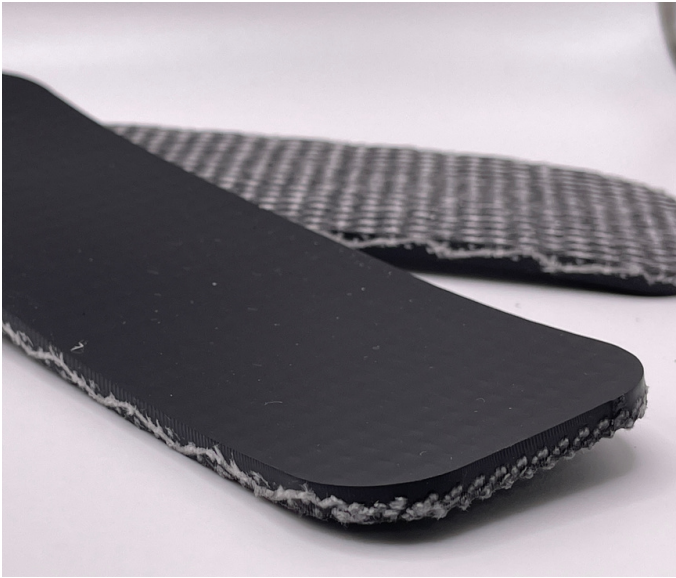


Automate I

01-400 | Technical Data Sheet



Technical Information

| | |
|---------------------------------|-----------------|
| Plies | 1 |
| Overall Thickness | .160" |
| Tensile Force | 150# @ 2% |
| in N/mm | 26 |
| Standard Tension | .50% |
| Min. Pulley | 2" |
| Min. Back Flex | 4" |
| Weight | 1.00 Lbs/SF |
| Product Operational Temp. Range | 0° to 180° F |
| Hardness | 80 Duro Shore A |
| Max. Width | 72" |

Material Construction

Conveying Surface

| | |
|---------------|--------|
| Compound | PVC |
| Cover Surface | Smooth |
| Color | Black |

Underside

| | |
|-------------------------|----------------------|
| Fabric | Interwoven Polyester |
| Bottom Surface | Brushed Fabric |
| Coefficient of Friction | .35 |

Standard Fabrications

| | |
|-------------------------|-----|
| Longitudinal Splice | Yes |
| Guide Applied to Cover | Yes |
| Sidewalls | Yes |
| Edge Capped | No |
| Cleats | Yes |
| Guide Applied to Bottom | Yes |
| Mechanical Lacing | Yes |

Features

| | |
|-----------------------|-----|
| FDA | No |
| Anti-Microbial | No |
| Anti-Static | No |
| Flame Retardant | No |
| Cross Rigid | No |
| Troughing | Yes |
| Curve Belt Compatible | No |

Automate I

01-400 | Splicing Instructions

High Speed Press Settings

| | |
|----------------|-----------|
| Pressure | 28 psi |
| Temp. Top | 384° F |
| Temp. Bottom | 350° F |
| Dwell Time | 120 sec |
| Foil Position | Top |
| Foil | Black PVC |
| Release Top | Smooth |
| Release Bottom | TFE |

Water Cooled Press Settings

| | |
|----------------|-----------|
| Pressure | 40 psi |
| Temp. Top | 385° F |
| Temp. Bottom | 350° F |
| Dwell Time | N/A |
| Foil Position | Top |
| Foil | Black PVC |
| Release Top | Smooth |
| Release Bottom | TFE |



Scan for splicing
demo video

Compatible Splices

Endless Splices

| | |
|------------------|-----|
| Step Splice | No |
| Straight Finger | Yes |
| Split Finger | No |
| Bias Finger | Yes |
| Skive | Yes |
| Finger Over Step | No |
| Step Over Finger | No |
| Electrode | No |
| Butt Weld | No |
| Lock Lap | No |

Mechanical Splices

| | |
|----------------|-----|
| Clipper | Yes |
| Alligator | Yes |
| Staple | Yes |
| Minet | Yes |
| Plastic Spiral | No |
| Plastic Rivet | No |
| Plastic Hinge | No |
| Super Screw | No |
| Bolt Hinge | No |
| Rivet Hinge | Yes |

Sparks Specialty Splices

| | |
|-----------------|-----|
| Hidden | No |
| Hybrid | Yes |
| Trailing Flap | Yes |
| VT | No |
| Hybrid VT | No |
| 7/11 | No |
| Urethane Top | No |
| Urethane Bottom | No |
| Urethane Splash | No |