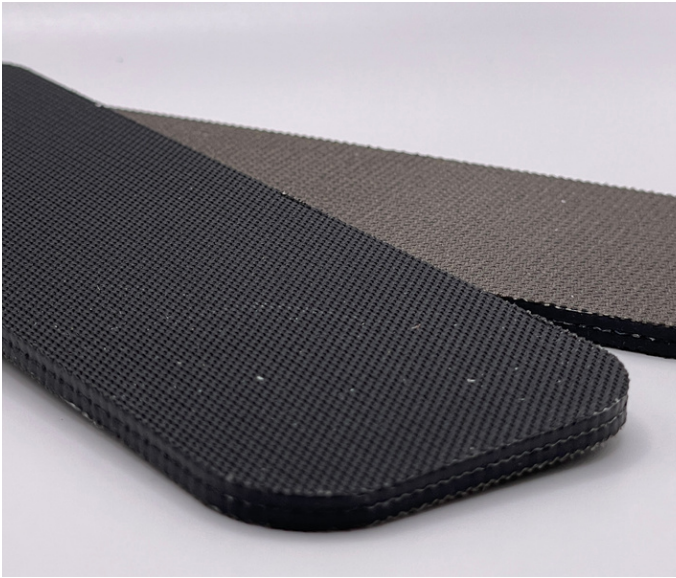


# WBH 345

## 02-239 | Technical Data Sheet



### Technical Information

Plies	3
Overall Thickness	.155"
Tensile Force	135# @ 2%
in N/mm	24
Standard Tension	.30%
Min. Pulley	3.5"
Min. Back Flex	4"
Weight	.940 Lbs/SF
Product Operational Temp. Range	-20° to 225° F
Hardness	N/A
Max. Width	76"

### Material Construction

#### Conveying Surface

Compound	Rubber
Cover Surface	Fabric w/RFL Impreg
Color	Black

#### Underside

Fabric	Monofilament Polyester
Bottom Surface	Bare
Coefficient of Friction	.20

### Standard Fabrications

Longitudinal Splice	No
Guide Applied to Cover	Yes
Sidewalls	No
Edge Capped	No
Cleats	Yes
Guide Applied to Bottom	Yes
Mechanical Lacing	Yes

### Features

FDA	No
Anti-Microbial	No
Anti-Static	Yes
Flame Retardant	No
Cross Rigid	Yes
Troughing	No
Curve Belt Compatible	No

# WBH 345

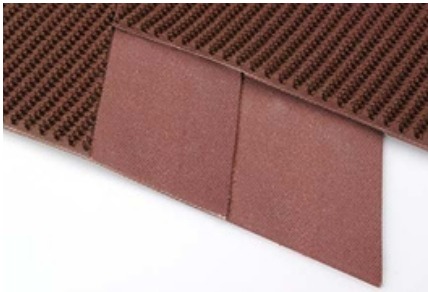
02-239 | Splicing Instructions

## High Speed Press Settings

Pressure	No settings
Temp. Top	
Temp. Bottom	
Dwell Time	
Foil Position	
Foil	
Release Top	
Release Bottom	

## Water Cooled Press Settings

Pressure	45 psi
Temp. Top	285° F
Temp. Bottom	285° F
Dwell Time	35 minutes
Foil Position	None
Foil	None
Release Top	Smooth
Release Bottom	TFE



Scan for splicing  
demo video

## Compatible Splices

### Endless Splices

Step Splice	Yes
Straight Finger	No
Split Finger	No
Bias Finger	No
Skive	No
Finger Over Step	No
Step Over Finger	No
Electrode	No
Butt Weld	No
Lock Lap	No

### Mechanical Splices

Clipper	Yes
Alligator	Yes
Staple	Yes
Minet	Yes
Plastic Spiral	No
Plastic Rivet	No
Plastic Hinge	No
Super Screw	No
Bolt Hinge	No
Rivet Hinge	Yes

### Sparks Specialty Splices

Hidden	Yes
Hybrid	No
Trailing Flap	Yes
VT	No
Hybrid VT	No
7/11	No
Urethane Top	Yes
Urethane Bottom	Yes
Urethane Splash	Yes