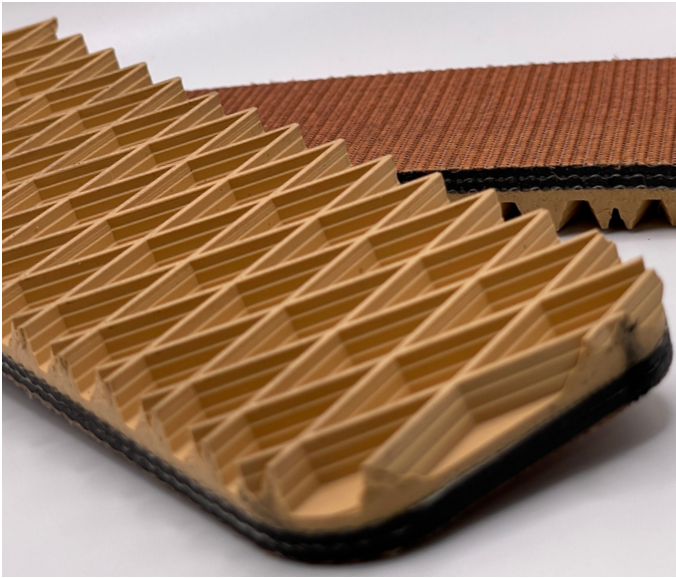


3 Ply Wedge Grip

02-374 | Technical Data Sheet



Technical Information

Plies	3
Overall Thickness	.335"
Tensile Force	225# @ 2%
in N/mm	39.375
Standard Tension	1%
Min. Pulley	3"
Min. Back Flex	5"
Weight	.154 Lbs/SF
Product Operational Temp. Range	-40° to 250° F
Hardness	50 Duro Shore A
Max. Width	72"

Material Construction

Conveying Surface

Compound	Gum Rubber
Cover Surface	Diamond Top
Color	Tan

Underside

Fabric	Polyester w/ RFL
Bottom Surface	Bare
Coefficient of Friction	.32

Standard Fabrications

Longitudinal Splice	Yes
Guide Applied to Cover	No
Sidewalls	No
Edge Capped	No
Cleats	No
Guide Applied to Bottom	Yes
Mechanical Lacing	Yes

Features

FDA	No
Anti-Microbial	No
Anti-Static	No
Flame Retardant	No
Cross Rigid	No
Troughing	Yes
Curve Belt Compatible	No

3 Ply Wedge Grip

02-374 | Splicing Instructions

High Speed Press Settings

Pressure	No settings
Temp. Top	
Temp. Bottom	
Dwell Time	
Foil Position	
Foil	
Release Top	
Release Bottom	

Water Cooled Press Settings

Pressure	45 psi
Temp. Top	150° F
Temp. Bottom	150° F
Dwell Time	20 minutes
Foil Position	None
Foil	None
Release Top	Impression
Release Bottom	TFE



Scan for splicing
demo video

Compatible Splices

Endless Splices

Step Splice	Yes
Straight Finger	No
Split Finger	No
Bias Finger	No
Skive	No
Finger Over Step	No
Step Over Finger	No
Electrode	No
Butt Weld	No
Lock Lap	Yes

Mechanical Splices

Clipper	Yes
Alligator	Yes
Staple	Yes
Minet	Yes
Plastic Spiral	No
Plastic Rivet	No
Plastic Hinge	No
Super Screw	No
Bolt Hinge	Yes
Rivet Hinge	Yes

Sparks Specialty Splices

Hidden	Yes
Hybrid	No
Trailing Flap	Yes
VT	No
Hybrid VT	No
7/11	No
Urethane Top	Yes
Urethane Bottom	Yes
Urethane Splash	Yes