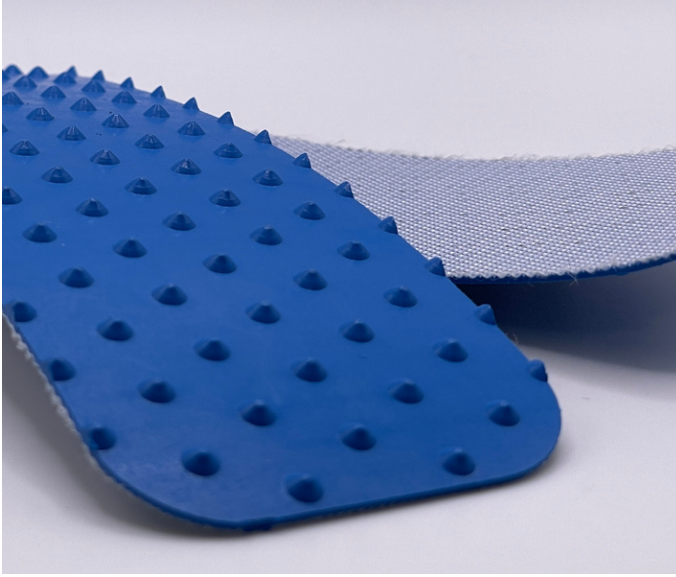


# Monoflex BLU 119

03-034 | Technical Data Sheet



## Technical Information

Plies	1
Overall Thickness	.100"
Tensile Force	34# @ 1%
in N/mm	6
Standard Tension	.5%
Min. Pulley	.24"
Min. Back Flex	.47"
Weight	.25 Lbs/SF
Product Operational Temp. Range	-40° to 212° F
Hardness	86 Duro Shore A
Max. Width	26"

## Material Construction

### Conveying Surface

Compound	Polyurethane
Cover Surface	Sharp Nipple Profile
Color	Blue

### Underside

Fabric	Monofilament Polyester
Bottom Surface	PU Impregnated
Coefficient of Friction	.25

## Standard Fabrications

Longitudinal Splice	No
Guide Applied to Cover	No
Sidewalls	No
Edge Capped	No
Cleats	No
Guide Applied to Bottom	Yes
Mechanical Lacing	No

## Features

FDA	Yes
Anti-Microbial	No
Anti-Static	No
Flame Retardant	No
Cross Rigid	Yes
Troughing	No
Curve Belt Compatible	No

# Monoflex BLU 119

03-034 | Splicing Instructions

## High Speed Press Settings

Pressure	20 PSI
Temp. Top	338° F
Temp. Bottom	320° F
Dwell Time	50 Seconds
Foil Position	Top
Foil	Blue PU
Release Top	Matte
Release Bottom	TFE

## Water Cooled Press Settings

Pressure	40 PSI
Temp. Top	350° F
Temp. Bottom	320° F
Dwell Time	30 Seconds
Foil Position	Top
Foil	Blue PU
Release Top	Matte
Release Bottom	TFE



Scan for splicing  
demo video

## Compatible Splices

### Endless Splices

Step Splice	No
Straight Finger	Yes
Split Finger	No
Bias Finger	Yes
Skive	No
Finger Over Step	No
Step Over Finger	No
Electrode	No
Butt Weld	No
Lock Lap	No

### Mechanical Splices

Clipper	Yes
Alligator	Yes
Staple	Yes
Minet	No
Plastic Spiral	No
Plastic Rivet	No
Plastic Hinge	No
Super Screw	No
Bolt Hinge	No
Rivet Hinge	No

### Sparks Specialty Splices

Hidden	No
Hybrid	No
Trailing Flap	No
VT	No
Hybrid VT	No
7/11	No
Urethane Top	No
Urethane Bottom	No
Urethane Splash	No