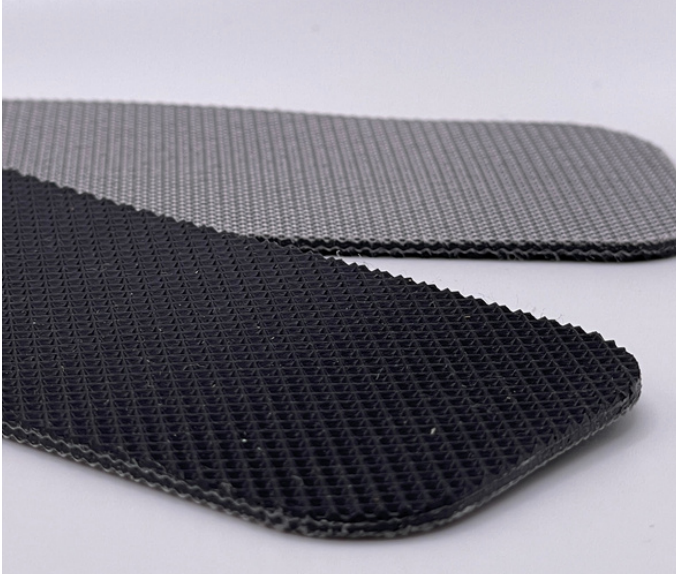


# Monoflex BP 220

03-051 | Technical Data Sheet



## Technical Information

Plies	2
Overall Thickness	.087"
Tensile Force	57# @ 1%
in N/mm	10
Standard Tension	.5%
Min. Pulley	1.9"
Min. Back Flex	2.8"
Weight	.53 Lbs/SF
Product Operational Temp. Range	0° to 160° F
Hardness	50 Duro Shore A
Max. Width	78"

## Material Construction

### Conveying Surface

Compound	PVC
Cover Surface	Inverted Diamond
Color	Black

### Underside

Fabric	Multifilament Polyester
Bottom Surface	PVC Impregnated
Coefficient of Friction	.2

## Standard Fabrications

Longitudinal Splice	Yes
Guide Applied to Cover	Yes
Sidewalls	Yes
Edge Capped	No
Cleats	Yes
Guide Applied to Bottom	Yes
Mechanical Lacing	Yes

## Features

FDA	No
Anti-Microbial	No
Anti-Static	Yes
Flame Retardant	No
Cross Rigid	Yes
Troughing	No
Curve Belt Compatible	No

# Monoflex BP 220

03-051 | Splicing Instructions

## High Speed Press Settings

Pressure	25 psi
Temp. Top	390° F
Temp. Bottom	350° F
Dwell Time	60 sec
Foil Position	Inside (SFL)
Foil	Black PVC
Release Top	Impression
Release Bottom	TFE

## Water Cooled Press Settings

Pressure	45 psi
Temp. Top	390° F
Temp. Bottom	350° F
Dwell Time	N/A
Foil Position	Inside (SFL)
Foil	Black PVC
Release Top	Impression
Release Bottom	TFE



Scan for splicing  
demo video

## Compatible Splices

### Endless Splices

Step Splice	No
Straight Finger	No
Split Finger	No
Bias Finger	No
Skive	No
Finger Over Step	No
Step Over Finger	No
Electrode	Yes
Butt Weld	Yes
Lock Lap	No

### Mechanical Splices

Clipper	Yes
Alligator	Yes
Staple	Yes
Minet	Yes
Plastic Spiral	No
Plastic Rivet	Yes
Plastic Hinge	Yes
Super Screw	No
Bolt Hinge	No
Rivet Hinge	No

### Sparks Specialty Splices

Hidden	No
Hybrid	No
Trailing Flap	No
VT	No
Hybrid VT	No
7/11	No
Urethane Top	No
Urethane Bottom	No
Urethane Splash	No