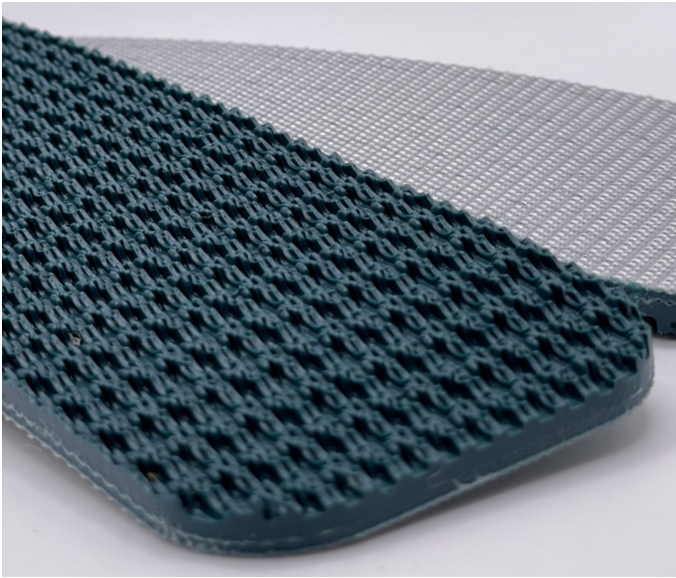


# Monoflex GP 230

03-377 | Technical Data Sheet



## Technical Information

|                                 |                 |
|---------------------------------|-----------------|
| Plies                           | 2               |
| Overall Thickness               | .207"           |
| Tensile Force                   | 46# @ 1%        |
| in N/mm                         | 8               |
| Standard Tension                | .5%             |
| Min. Pulley                     | 2"              |
| Min. Back Flex                  | 2.75"           |
| Weight                          | .9 Lbs/SF       |
| Product Operational Temp. Range | -4° to 140° F   |
| Hardness                        | 35 Duro Shore A |
| Max. Width                      | 78.7"           |

## Material Construction

### Conveying Surface

|               |            |
|---------------|------------|
| Compound      | PVC        |
| Cover Surface | Rough Top  |
| Color         | Blue/Green |

### Underside

|                         |                        |
|-------------------------|------------------------|
| Fabric                  | Monofilament Polyester |
| Bottom Surface          | Bare                   |
| Coefficient of Friction | .2                     |

## Standard Fabrications

|                         |     |
|-------------------------|-----|
| Longitudinal Splice     | Yes |
| Guide Applied to Cover  | No  |
| Sidewalls               | No  |
| Edge Capped             | No  |
| Cleats                  | No  |
| Guide Applied to Bottom | Yes |
| Mechanical Lacing       | Yes |

## Features

|                       |     |
|-----------------------|-----|
| FDA                   | No  |
| Anti-Microbial        | No  |
| Anti-Static           | Yes |
| Flame Retardant       | No  |
| Cross Rigid           | Yes |
| Troughing             | No  |
| Curve Belt Compatible | No  |

# Monoflex GP 230

03-377 | Splicing Instructions

## High Speed Press Settings

|                |              |
|----------------|--------------|
| Pressure       | 25 psi       |
| Temp. Top      | 360° F       |
| Temp. Bottom   | 342° F       |
| Dwell Time     | 2 minutes    |
| Foil Position  | Inside (SFL) |
| Foil           | Green PVC    |
| Release Top    | Impression   |
| Release Bottom | TFE          |

## Water Cooled Press Settings

|                |            |
|----------------|------------|
| Pressure       | 40 psi     |
| Temp. Top      | 375° F     |
| Temp. Bottom   | 365° F     |
| Dwell Time     | 30 sec     |
| Foil Position  | None       |
| Foil           | None       |
| Release Top    | Impression |
| Release Bottom | TFE        |



Scan for splicing  
demo video

## Compatible Splices

### Endless Splices

|                  |     |
|------------------|-----|
| Step Splice      | Yes |
| Straight Finger  | No  |
| Split Finger     | Yes |
| Bias Finger      | Yes |
| Skive            | No  |
| Finger Over Step | Yes |
| Step Over Finger | Yes |
| Electrode        | No  |
| Butt Weld        | No  |
| Lock Lap         | No  |

### Mechanical Splices

|                |     |
|----------------|-----|
| Clipper        | Yes |
| Alligator      | Yes |
| Staple         | Yes |
| Minet          | Yes |
| Plastic Spiral | Yes |
| Plastic Rivet  | No  |
| Plastic Hinge  | Yes |
| Super Screw    | No  |
| Bolt Hinge     | No  |
| Rivet Hinge    | No  |

### Sparks Specialty Splices

|                 |     |
|-----------------|-----|
| Hidden          | No  |
| Hybrid          | Yes |
| Trailing Flap   | No  |
| VT              | No  |
| Hybrid VT       | No  |
| 7/11            | No  |
| Urethane Top    | No  |
| Urethane Bottom | No  |
| Urethane Splash | No  |