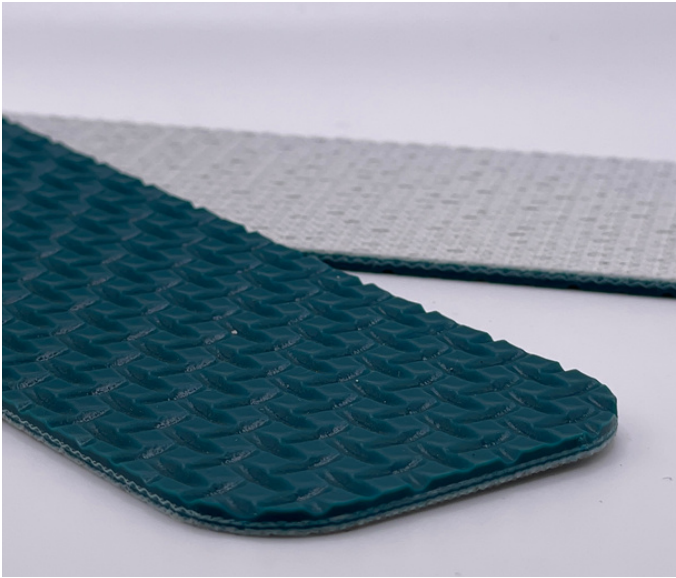


Monoflex GP 270

03-378 | Technical Data Sheet



Technical Information

Plies	2
Overall Thickness	.102"
Tensile Force	46# @ 1%
in N/mm	8
Standard Tension	.5%
Min. Pulley	1.6"
Min. Back Flex	2"
Weight	.53 Lbs/SF
Product Operational Temp. Range	14° to 176° F
Hardness	35 Duro Shore A
Max. Width	118"

Material Construction

Conveying Surface

Compound	PVC
Cover Surface	Lattice Top
Color	Blue/Green

Underside

Fabric	Monofilament Polyester
Bottom Surface	Whisper Weave
Coefficient of Friction	.25

Standard Fabrications

Longitudinal Splice	Yes
Guide Applied to Cover	Yes
Sidewalls	Yes
Edge Capped	No
Cleats	Yes
Guide Applied to Bottom	Yes
Mechanical Lacing	Yes

Features

FDA	No
Anti-Microbial	No
Anti-Static	Yes
Flame Retardant	No
Cross Rigid	Yes
Troughing	No
Curve Belt Compatible	No

Monoflex GP 270

03-378 | Splicing Instructions

High Speed Press Settings

Pressure	25 psi
Temp. Top	380° F
Temp. Bottom	340° F
Dwell Time	60 sec
Foil Position	Top
Foil	Green PVC
Release Top	Impression
Release Bottom	TFE

Water Cooled Press Settings

Pressure	40 psi
Temp. Top	380° F
Temp. Bottom	340° F
Dwell Time	N/A
Foil Position	Top
Foil	Green PVC
Release Top	Impression
Release Bottom	TFE



Scan for splicing
demo video

Compatible Splices

Endless Splices

Step Splice	Yes
Straight Finger	No
Split Finger	Yes
Bias Finger	Yes
Skive	No
Finger Over Step	Yes
Step Over Finger	Yes
Electrode	No
Butt Weld	No
Lock Lap	No

Mechanical Splices

Clipper	Yes
Alligator	Yes
Staple	Yes
Minet	No
Plastic Spiral	Yes
Plastic Rivet	Yes
Plastic Hinge	Yes
Super Screw	No
Bolt Hinge	No
Rivet Hinge	No

Sparks Specialty Splices

Hidden	No
Hybrid	Yes
Trailing Flap	No
VT	No
Hybrid VT	No
7/11	No
Urethane Top	No
Urethane Bottom	No
Urethane Splash	No