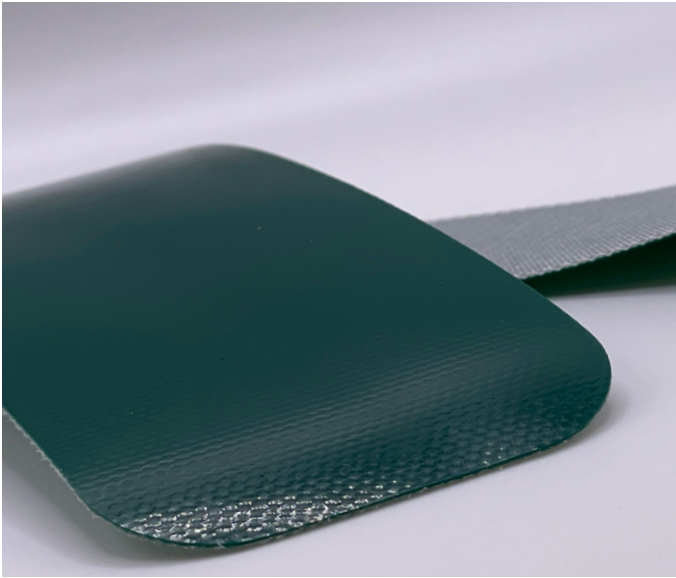


# Ultra Kool I Green

03-702 | Technical Data Sheet



## Technical Information

Plies	1
Overall Thickness	.028"
Load for 1% Extension in N/mm	23# @ 1% 4
Standard Tension	.50%
Min. Pulley	.25"
Min. Back Flex	.6"
Weight	.16 Lbs/SF
Product Operational Temp. Range	-22° to 212° F
Hardness	85
Max. Width	116"

## Material Construction

### Conveying Surface

Compound	Polyurethane
Cover Surface	.008" Smooth Glossy
Color	Dark Green

### Underside

Fabric	Polyester
Bottom Surface	PU Impregnated
Coefficient of Friction	.25

## Standard Fabrications

Longitudinal Splice	No
Guide Applied to Cover	Yes
Sidewalls	No
Edge Capped	No
Cleats	No
Guide Applied to Bottom	Yes
Plastic Spiral Lace	Yes
Mechanical Lacing	Yes

## Features

FDA	Yes
Anti-Microbial	No
Anti-Static	No
Flame Retardant	No
Cross Rigid	Yes
Troughing	No
Curve Belt Compatible	No

# Ultra Kool | Green

03-702 | Splicing Instructions

## High Speed Press Settings

Pressure	20 psi
Temp. Top	320° F
Temp. Bottom	320° F
Press Time	2 minutes
Foil Position	Top
Foil	Green PU
Release Top	Gloss
Release Bottom	TFE

## Water Cooled Press Settings

Pressure	20 psi
Temp. Top	320° F
Temp. Bottom	320° F
Press Time	45 sec
Foil Position	Top
Foil	Green PU
Release Top	Gloss
Release Bottom	TFE



Scan for splicing  
demo video

## Compatible Splices

### Endless Splices

Step Splice	Yes
Straight Finger	No
Split Finger	No
Skive	Yes
Finger Over Step	Yes
Step Over Finger	No
Electrode	Yes
Butt Weld	No
Lock Lap	No

### Mechanical Splices

Clipper	Yes
Alligator	No
Staple	No
Minet	Yes
Plastic Spiral	Yes
Plastic Rivet	No
Hinge	Yes
Super Screw	No
Bolt Hinge	Yes
Solid Rivet	Yes

### Sparks Specialty Splices

Hidden	Yes
Hybrid	No
Trailing Flap	No
VT	Yes
Hybrid VT	Yes
7/11	No
Urethane Top	Yes
Urethane Bottom	No
Urethane Splash	No