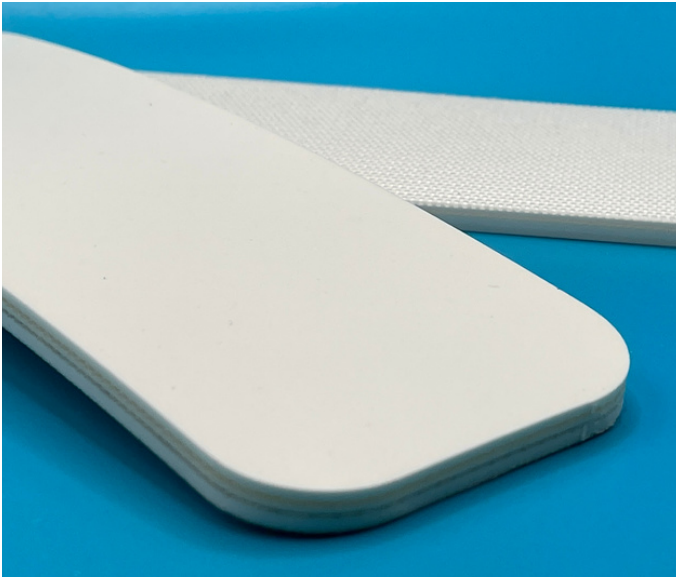


Monoflex WU 211 AS

03-705 | Technical Data Sheet



Technical Information

Plies	2
Overall Thickness	.059"
Tensile Force	34# @ 1%
in N/mm	6
Standard Tension	.50%
Min. Pulley	1.2"
Min. Back Flex	1.2"
Weight	.33 Lbs/SF
Product Operational Temp. Range	-4° to 212° F
Hardness	85 Duro Shore A
Max. Width	126"

Material Construction

Conveying Surface

Compound	Polyurethane
Cover Surface	.008" Smooth Matte
Color	White

Underside

Fabric	Polyester
Bottom Surface	.008" Smooth
Coefficient of Friction	Glossy .90

Standard Fabrications

Longitudinal Splice	No
Guide Applied to Cover	Yes
Sidewalls	Yes
Edge Capped	Yes
Cleats	Yes
Guide Applied to Bottom	Yes
Mechanical Lacing	Yes

Features

FDA	Yes
Anti-Microbial	No
Anti-Static	Yes
Flame Retardant	No
Cross Rigid	Yes
Troughing	No
Curve Belt Compatible	No

Mono Flex WU 211 AS

03-705 | Splicing Instructions

High Speed Press Settings

Pressure	25 psi
Temp. Top	329° F
Temp. Bottom	329° F
Dwell Time	2 minutes
Foil Position	Top
Foil	White PU
Release Top	Gloss
Release Bottom	Silicone

Water Cooled Press Settings

Pressure	25 psi
Temp. Top	329° F
Temp. Bottom	329° F
Dwell Time	60 sec
Foil Position	Top
Foil	White PU
Release Top	Gloss
Release Bottom	Silicone



Scan for splicing
demo video

Compatible Splices

Endless Splices

Step Splice	No
Straight Finger	Yes
Split Finger	No
Bias Finger	Yes
Skive	No
Finger Over Step	No
Step Over Finger	No
Electrode	No
Butt Weld	No
Lock Lap	No

Mechanical Splices

Clipper	Yes
Alligator	Yes
Staple	No
Minet	No
Plastic Spiral	Yes
Plastic Rivet	Yes
Plastic Hinge	No
Super Screw	No
Bolt Hinge	No
Rivet Hinge	No

Sparks Specialty Splices

Hidden	No
Hybrid	No
Trailing Flap	No
VT	No
Hybrid VT	No
7/11	No
Urethane Top	No
Urethane Bottom	No
Urethane Splash	No