

# 3.19 DURA•DRIVE PLUS

The Dura Drive Plus one piece motorized pulley is compact yet powerful. All gearing is made of high quality alloy steel ensuring years without breakdown. The Dura Drive Plus is also low maintenance with an in-place oil change after 40,000 hours. This ensures minimal downtime, which in turn ensures lower cost and higher productivity.



### Shaft Seal

The end housings are fitted with custom designed one piece cartridge seals. This provides excellent protection against ingress of dust, grit, water and high-pressure cleanings. The cartridge seals are specially designed to prevent wear to the shafts.

### Electric Motor

All Sparks Belting motorized pulleys contain motors tested to UL 1004 – 1:2012 standards with Class F insulation standard (Class H insulation available upon request). The motor is an asynchronous squirrel cage induction type. Class F motors are suitable for most applications with ambient temperatures of +100°F to -10°F. For temperatures above or below, contact Sparks Belting for a recommendation.

Electric motors with windings for special voltages and frequencies are available upon request.

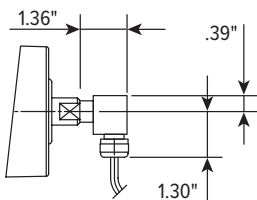
Sparks Belting motorized pulleys are inverter duty motors and can, therefore, have a step-less speed control in combination with static frequency converters in the range from 30 to 70 HZ.

### Electrical Connections

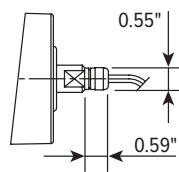
Pulleys in the 3.19" diameter line are not available in dual voltage or with a terminal box electrical connection.

### Constructions & Materials

Component	Standard	Options	Not available
Shaft	Mild Steel	Stainless Steel	
Shell	Mild Steel	Stainless Steel	
	Crowned	Hard Chrome	
		Rubber Lagged	
		Flat Face	
End Caps	Aluminum	Stainless Steel	Mild Steel, Bolt on
		Pressed/glued	
Sealing Systems	Cartridge Seal		
Electrical Motor	3 Phase Asynchronous	Thermal Overload Protection	Single Phase
			Dual Voltage (face width restrictions)
			Wide Range Voltage
Electrical Connection	Straight Connector and 5.5m cable	Thermo-plastic Elbow Connector and 5.5m cable	Stainless Steel Terminal Box
			Steel Conduit Elbow Connector
Motor Insulation	Class F	Class H	



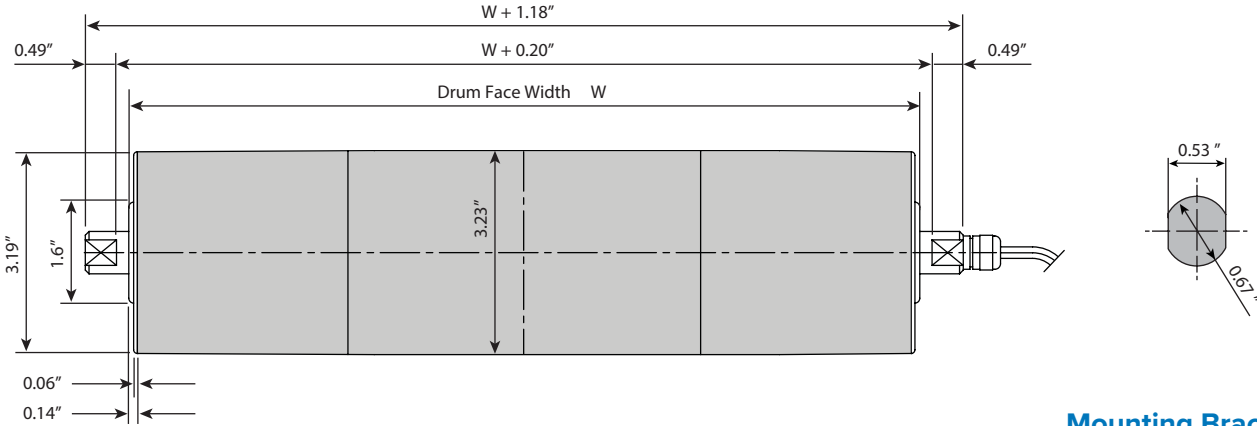
Thermo-plastic elbow connector with 5.5m cable



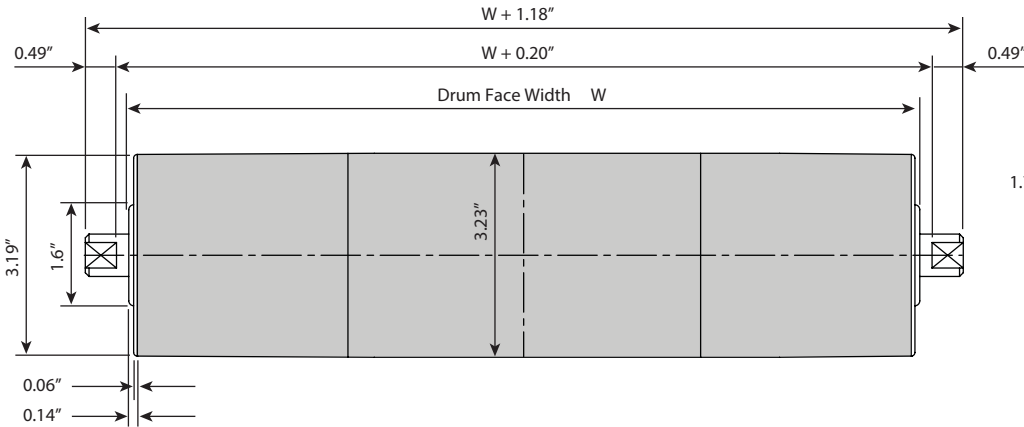
Straight connector and 5.5m cable



**Motorized Pulley Dimensions**

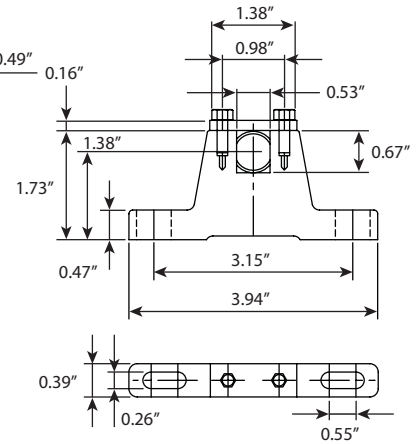


**Idler Pulley Dimensions**



**Mounting Bracket**

Material: Cast iron or stainless steel bracket



**Performance Specifications**

HP	Minimum Face Width	FPM (nominal)	Belt Pull (lbs)	Drum Torque (lbs-ft)
0.16	9.84"	38	141	19
		54	89	12
		71	74	10
		94	56	7
		133	40	5
		189	28	4
		236	22	3

**Standard Face Widths**

11.81" (19 lbs)	13.78" (21 lbs)	15.75" (22 lbs)	17.72" (24 lbs)	19.69" (25 lbs)
21.65" (29 lbs)	23.62" (31 lbs)	25.59" (33 lbs)	27.56" (35 lbs)	29.53" (36 lbs)
31.50" (38 lbs)	33.46" (39 lbs)	35.43" (41 lbs)		

- Maximum face width is 59.50"
- Other face widths are available
- Maximum lagging thickness is 1/8" (8% increase in finished speed)
- V-groove option must be two times the min. face width and groove width
- Same diameter (3.23") grooved tube is only option
- All units are available in 3-phase single voltage, 230v or 460v
- No vertical mount
- Oversized Drum shell diameters larger than 3.23 are not available.