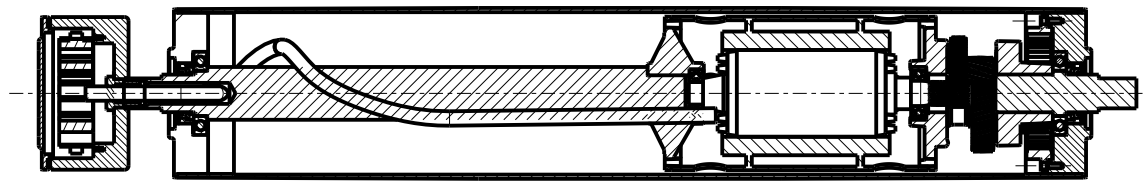
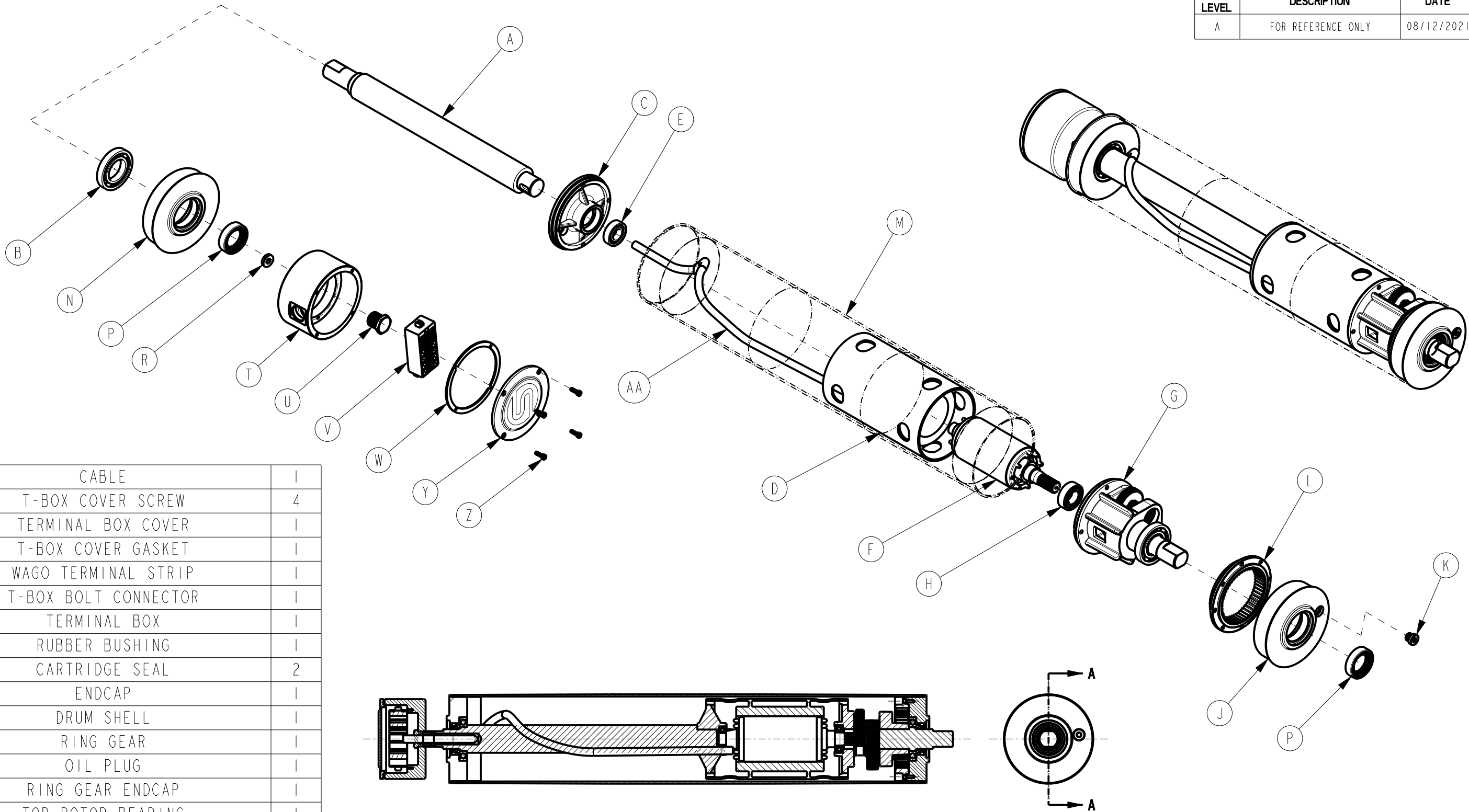


REV. LEVEL	DESCRIPTION	DATE	ENG
A	FOR REFERENCE ONLY	08/12/2021	CA



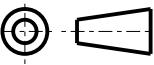

SECTION A-A

NOTE:

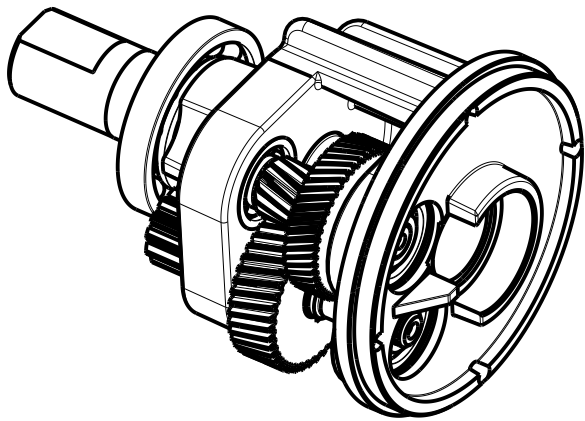
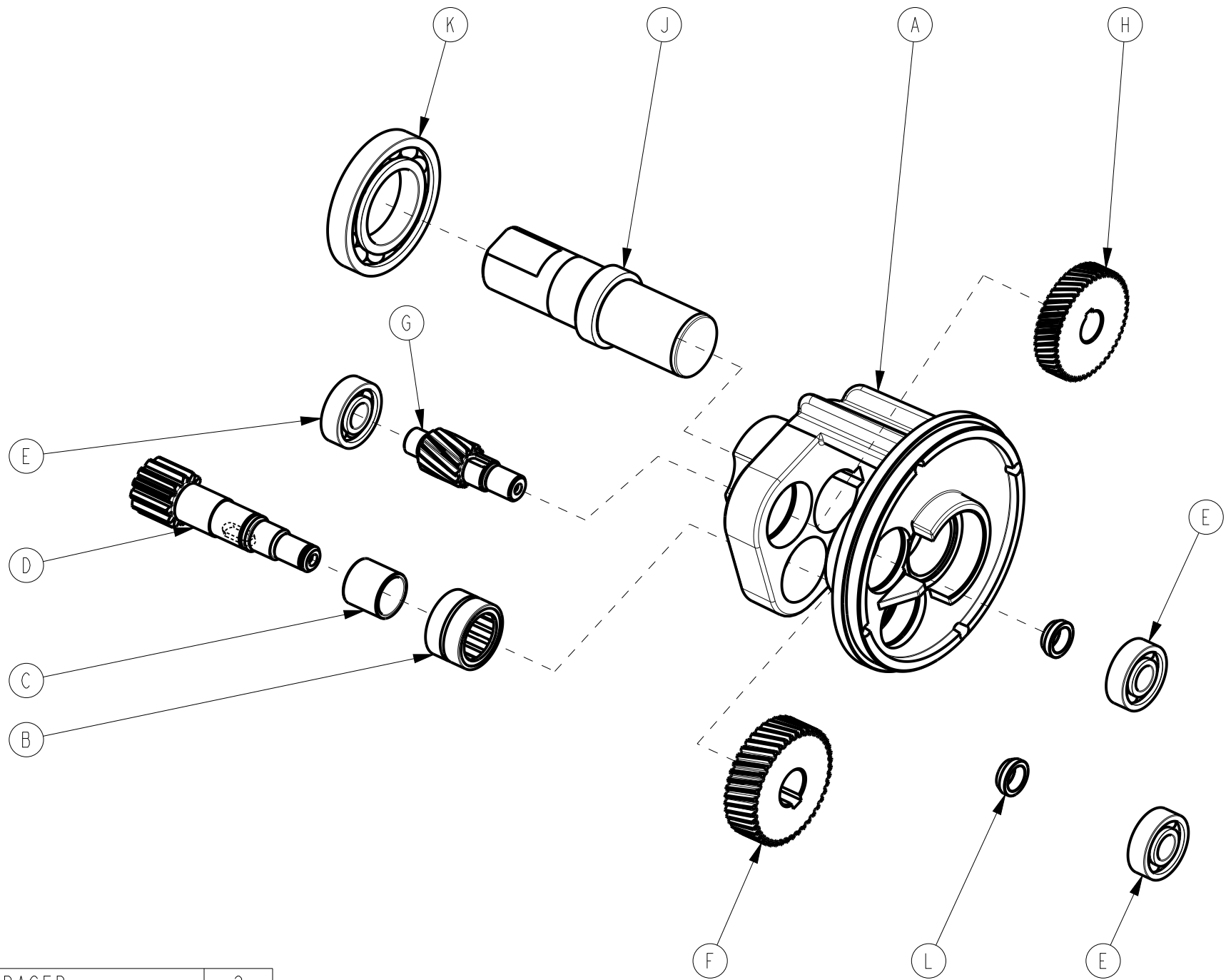
- ITEM "M" IS SHOWN IN TRANSPARENT FOR DISPLAY OF INTERNAL PARTS.

* CARTRIDGE SEAL IS STANDARD ON OUR CURRENT LINE OF DURA DRIVE PLUS MOTORIZED PULLEYS. PREVIOUS VERSIONS MAY HAVE BEEN ASSEMBLED WITH A LABYRINTH SEAL, OIL SEAL, AND SHAFT SLEEVE. PREVIOUS VERSIONS WITH THE OLD SEAL SYSTEM CAN BE RETROFIT WITH CARTRIDGE SEALS IF THE LABYRINTH SEAL, OIL SEAL, AND SHAFT SLEEVE ARE REMOVED WHICH WILL REQUIRE DISASSEMBLY OF THE PULLEY. IF FIELD REPLACEMENT OF THE LABYRINTH AND OIL SEAL IS REQUIRED WITHOUT DISASSEMBLY, A SEAL KIT CAN BE REQUESTED.

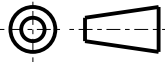

AA	CABLE	1
Z	T-BOX COVER SCREW	4
Y	TERMINAL BOX COVER	1
W	T-BOX COVER GASKET	1
V	WAGO TERMINAL STRIP	1
U	T-BOX BOLT CONNECTOR	1
T	TERMINAL BOX	1
R	RUBBER BUSHING	1
* P	CARTRIDGE SEAL	2
N	ENDCAP	1
M	DRUM SHELL	1
L	RING GEAR	1
K	OIL PLUG	1
J	RING GEAR ENDCAP	1
H	TOP ROTOR BEARING	1
G	GEARBOX ASSEMBLY	1
F	ROTOR ASSEMBLY	1
E	BOTTOM ROTOR BEARING	1
D	MOTOR	1
C	REAR FLANGE	1
B	ENDCAP BEARING	1
A	VARIABLE SHAFT	1
ITEM	DESCRIPTION	QTY

 THIRD ANGLE PROJECTION	INTERPRET DIMENSIONING AND TOLERANCING PER ASME Y14.5-2009	 A JSJ Business 5005 Kraft Ave, Grand Rapids, MI 49512		
MATERIAL: N/A	CREATED BY: CHAKRY	PART NAME: DDP TOP LEVEL ASSEMBLY - GENERIC		
TOLERANCES UNLESS OTHERWISE SPECIFIED FRACTIONAL: ±1/64 DECIMAL: X.X ±0.03 X.XX ±0.015 X.XXX ±0.005 ANGULAR: ±1°	RELEASED ON: 08/12/2021	PART NO: DDPXXXXX		
SCALE: 1 : 4		REV. LEVEL: A	SHEET: 1 OF 2	SIZE: B

REV. LEVEL	DESCRIPTION	DATE	ENG
A	FOR REFERENCE ONLY	08/12/2021	CA



L	GEARBOX SPACER	2
K	ENDCAP BEARING	1
J	FIXED SHAFT	1
H	COUNTER WHEEL	1
G	INTERMEDIATE PINION	1
F	INTERMEDIATE WHEEL	1
E	GEARBOX BEARING	3
D	OUTPUT PINION	1
C	INNER RING	1
B	NEEDLE BEARING	1
A	GEAR BOX HOUSING	1
ITEM	DESCRIPTION	QTY

 THIRD ANGLE PROJECTION	INTERPRET DIMENSIONING AND TOLERANCING PER ASME Y14.5-2009		 A JSJ Business 5005 Kraft Ave, Grand Rapids, MI 49512	
	MATERIAL: N/A	CREATED BY: CHAKRY	PART NAME: GEARBOX ASSEMBLY	
TOLERANCES UNLESS OTHERWISE SPECIFIED FRACTIONAL: $\pm 1/64$ DECIMAL: X.X ± 0.03 X.XX ± 0.015 X.XXX ± 0.005 ANGULAR: $\pm 1^\circ$	RELEASED ON: 08/12/2021		PART NO: TMXXXXX	
	SCALE: 1 : 2		REV. LEVEL: A	SHEET: 2 OF 2
				SIZE: B