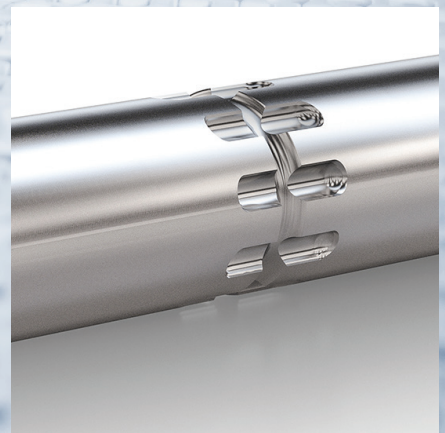


# *DURA•DRIVE* **SPM**

## Synchronous Permanent Magnet (SPM) Motorized Pulleys

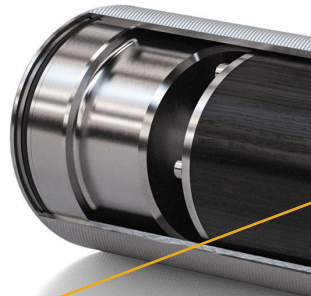


# Permanent Magnet Motor Technology for High-Level Automation

Sparks DURA•DRIVE SYNCHRONOUS PERMANENT MAGNET (SPM) motorized pulleys use the latest permanent magnet motor technology to increase the performance of your conveyor system. Equipped with a high torque motor that runs six times more efficiently than a traditional motor, DURA•DRIVE SPM is designed for all types of high-level automation.

SPM's precision acceleration gives it the ability to run at a wide variety of speeds, and to stop, start and change direction extremely quickly. Servo-level precision can be achieved when fitted with an optional feedback device.

SPM motors run oil-free with zero possibility of oil leaks, making them an ideal choice for food-processing operations. They're small but powerful, running up to 0.5 horsepower in the 3.19" diameter and up to 1.35 horsepower in the 4.39" diameter, and they run cool for significant heat reduction vs. traditional motors. You'll also enjoy the safety benefits of a motor with no external parts, no pinch points, and no risk for electric shock.



**SPM uses permanent magnet motor technology** (the same technology used in electric vehicles and wind turbines) and is oil-free.

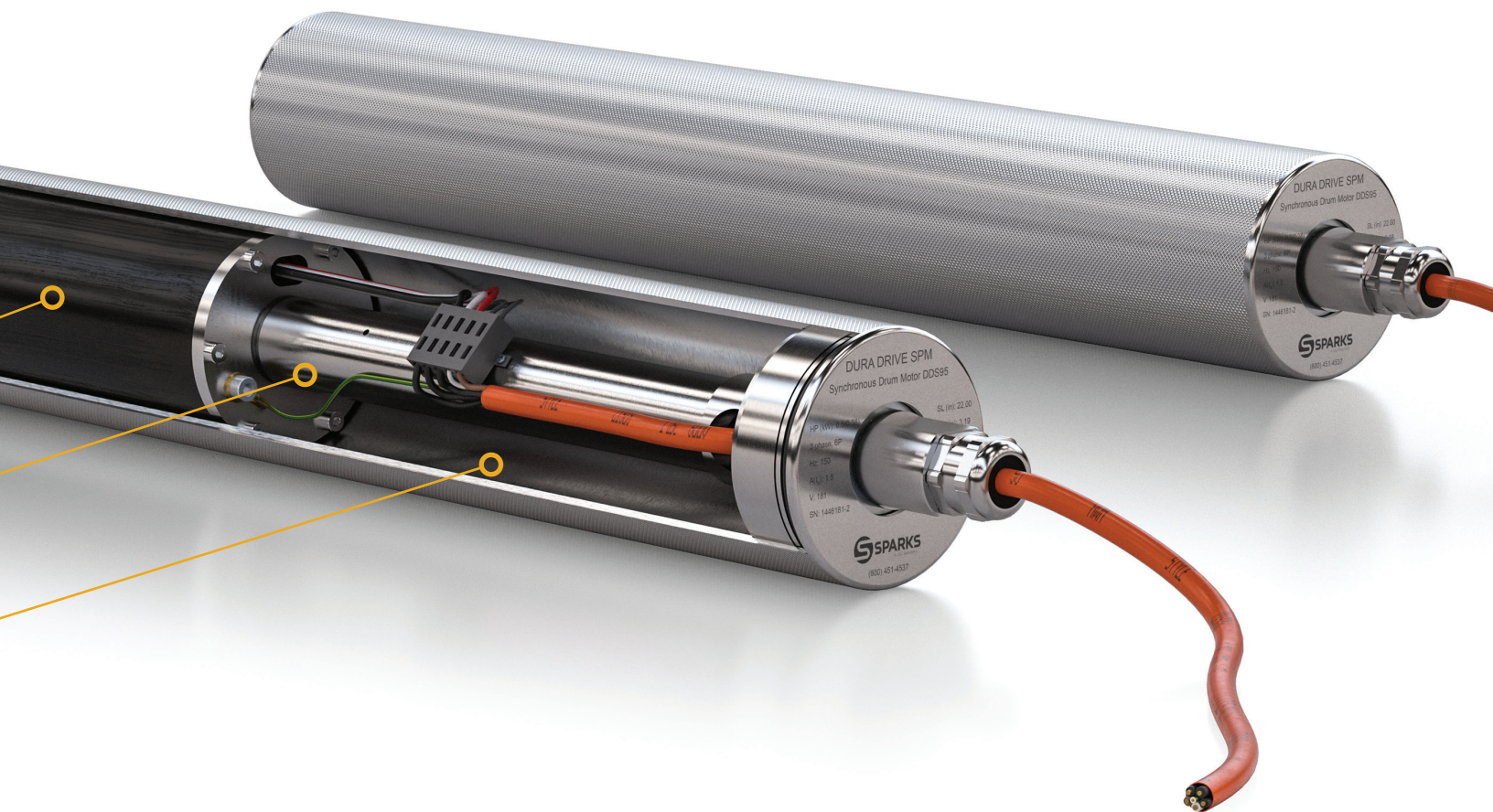
**All components are sealed,** eliminating pinch points and the risk of electric shock and for a safer and cleaner drive than a conventional belt drive.

The motor can run at a **wide range of speeds with full torque** for standardization, and is six times more efficient than a traditional asynchronous electric motor.

## Completely Customizable

Sparks DURA•DRIVE SPM motorized pulleys are made in the U.S.A using hardened steel servo-quality planetary gears, and can be easily designed into new systems or incorporated into existing systems. We offer a number of different modifications to meet your individual needs. Choose the drum shell diameter, external surface, servo interface, and electrical connections that work best for you. We also welcome the opportunity to apply what we've learned from more than forty years in motorized pulley manufacturing to design and build a custom SPM pulley that supports your specialized conveyor systems.





The completely sealed internal mechanism is **safer and cleaner than a conventional belt drive.**

DURA•DRIVE SPM's precision acceleration allows it to **stop, start and change direction at extreme speeds.**

Servo precision can be achieved when fitted with an optional feedback device.

DURA•DRIVE SPM can be modified or completely customized to meet the unique needs of your operation.

## Optional Configurations

### Drum Shell Diameters

3.19", 4.39"

### Drum Shell Surface Options

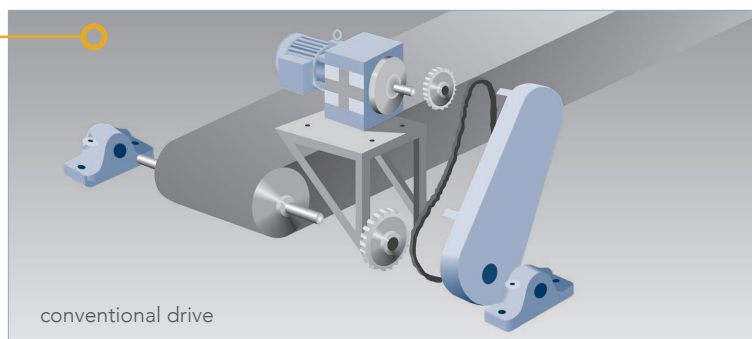
lagging, knurling, 1/4" key for sprockets, positive drive, V-groove, crowned, flat-faced

### Internal Options

encoder, resolver (feedback with servo drives)

### Electrical Connector Options

terminal box, cable with straight fitting, cable with 90° elbow



conventional drive



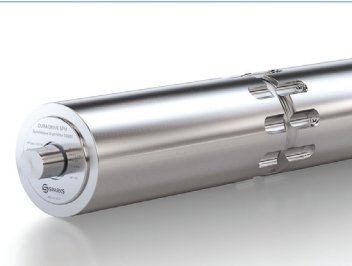
1/4" key for sprockets



lagging



knurling



positive drive

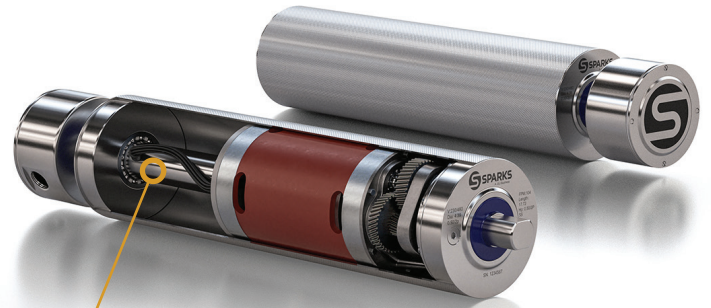


We also offer DURA•DRIVE PLUS (DDP), a completely sealed pulley drive system that sets the standard for reliability, productivity and ease of installation.

Contact us today to learn more about how Sparks DDP or SPM can improve the safety and efficiency of your conveyor systems.



## DURA•DRIVE PLUS



DDP uses a completely sealed internal mechanism that is safer and cleaner than a conventional belt drive. It only requires an in-place oil change after 40,000 hours with no disassembly required.



[www.sparksbelting.com](http://www.sparksbelting.com)  
[customerservice@sparksbelting.com](mailto:customerservice@sparksbelting.com)  
24/7 Service (800) 451-4537  
Fax (800) 338-2358

13 Locations in the U.S. and Mexico:

Ontario, California	Cleveland, Ohio
Denver, Colorado	York, Pennsylvania
Conyers, Georgia	Rock Hill, South Carolina
Hammond, Indiana	Auburn, Washington
Spring Lake, Michigan	Monterrey, Mexico
Fairfield, New Jersey	Leon, Mexico

Headquarters: 3800 Stahl Dr., SE, Grand Rapids, MI 49546